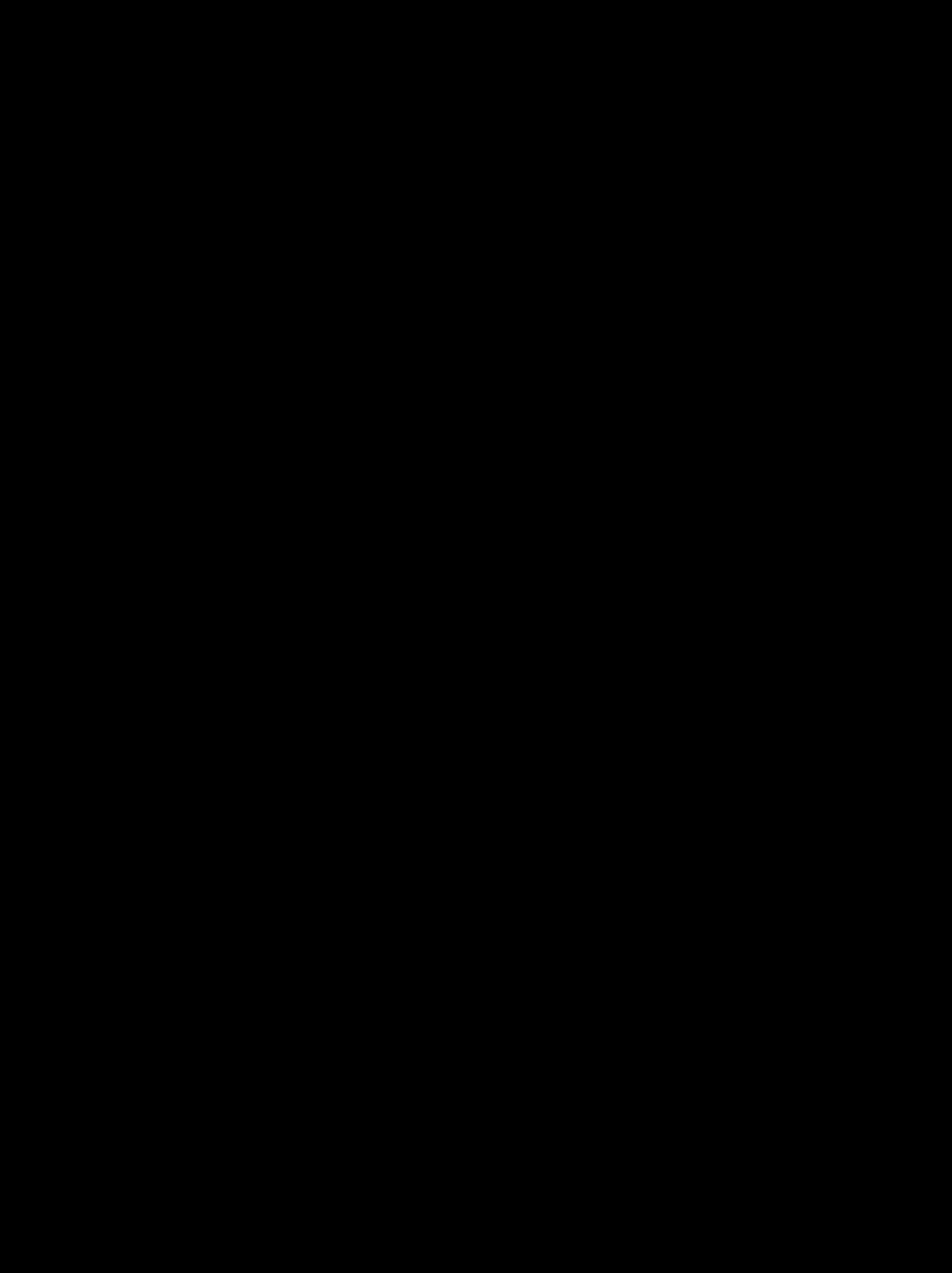
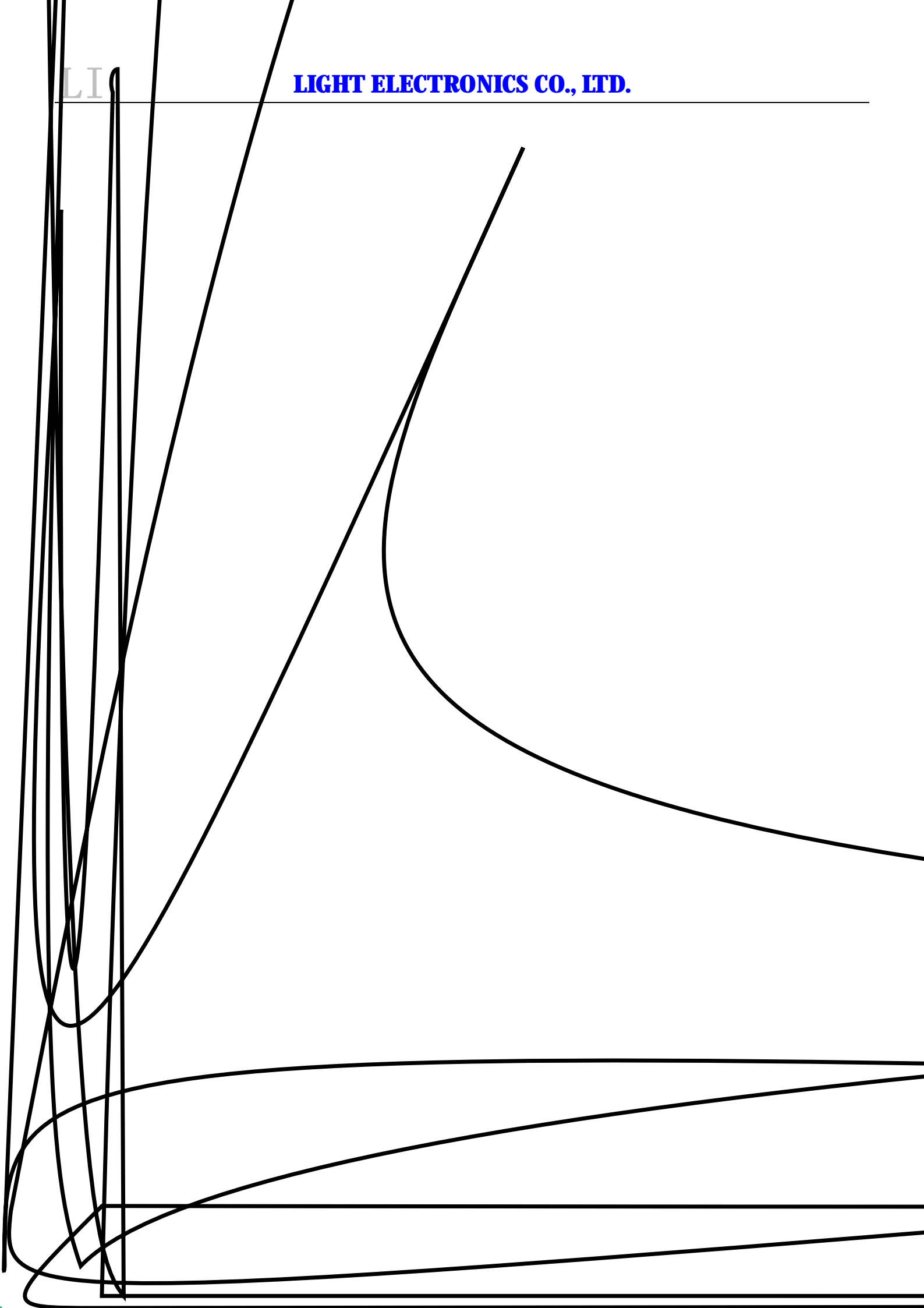


LG-T1921RGBA-TD-AL

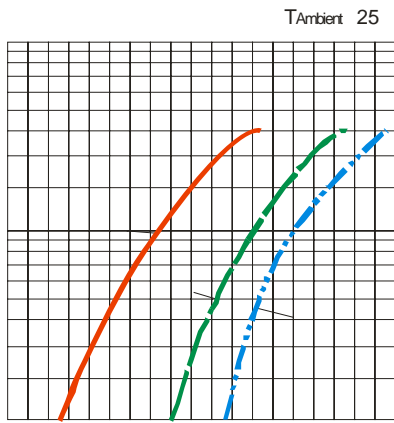


LI

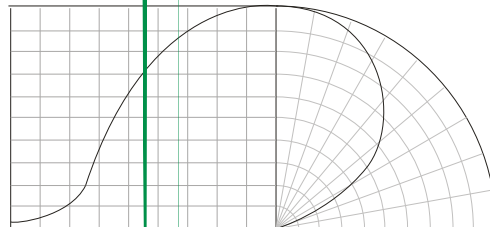
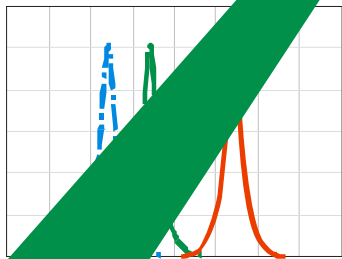
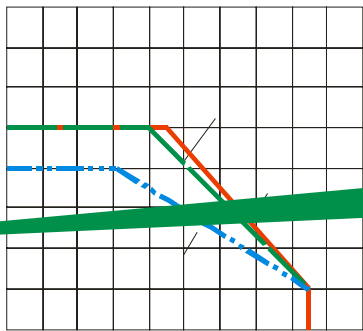
LIGHT ELECTRONICS CO., LTD.



Typical Characteristics Curves



T_{Ambient} 25



Reliability Test Items And Conditions

实验项目	参考标准	实验条件	时间	样品数	判据
		↔			

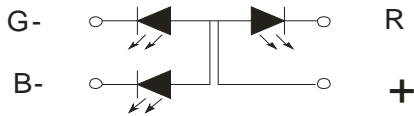
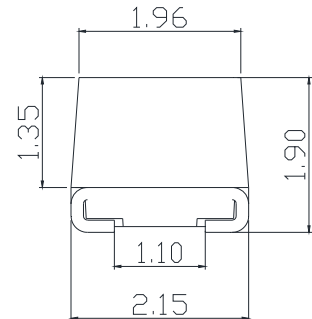
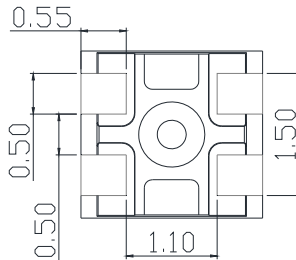
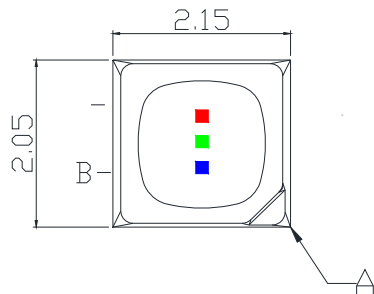
Criteria For Judging Damage

测试项目	符号	测试条件	判定标准
			μ
			≧ ≦

Product design and operational recommendation

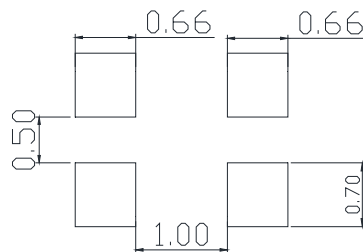
1 mm

Product design Unit: mm



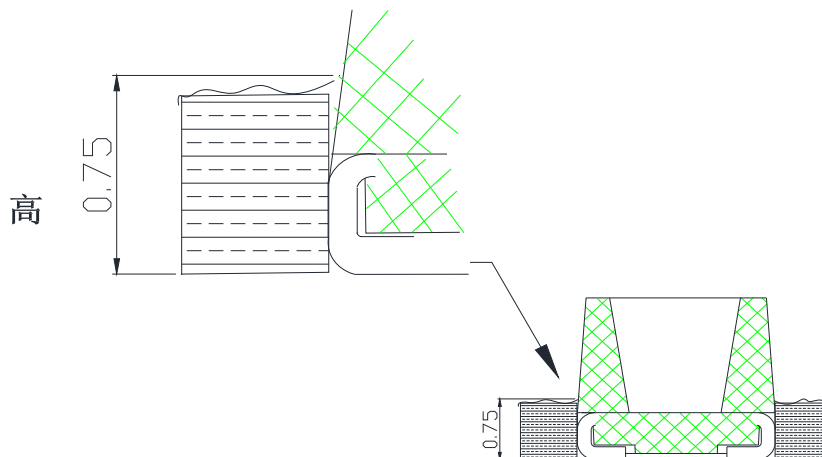
2 mm

Recommended soldering pad (Unit: mm)



3 0.75mm

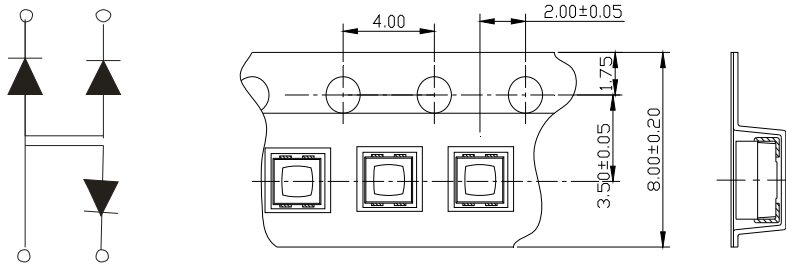
Recommendation for glue filling: filling height must be higher than or equal to 0.75mm



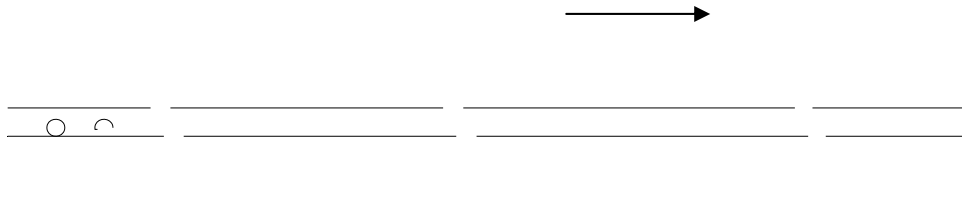
1

Packaging (1)

◇ Carrier Tape



◇ Details Of Carrier Tape



◇ Reel Dimension

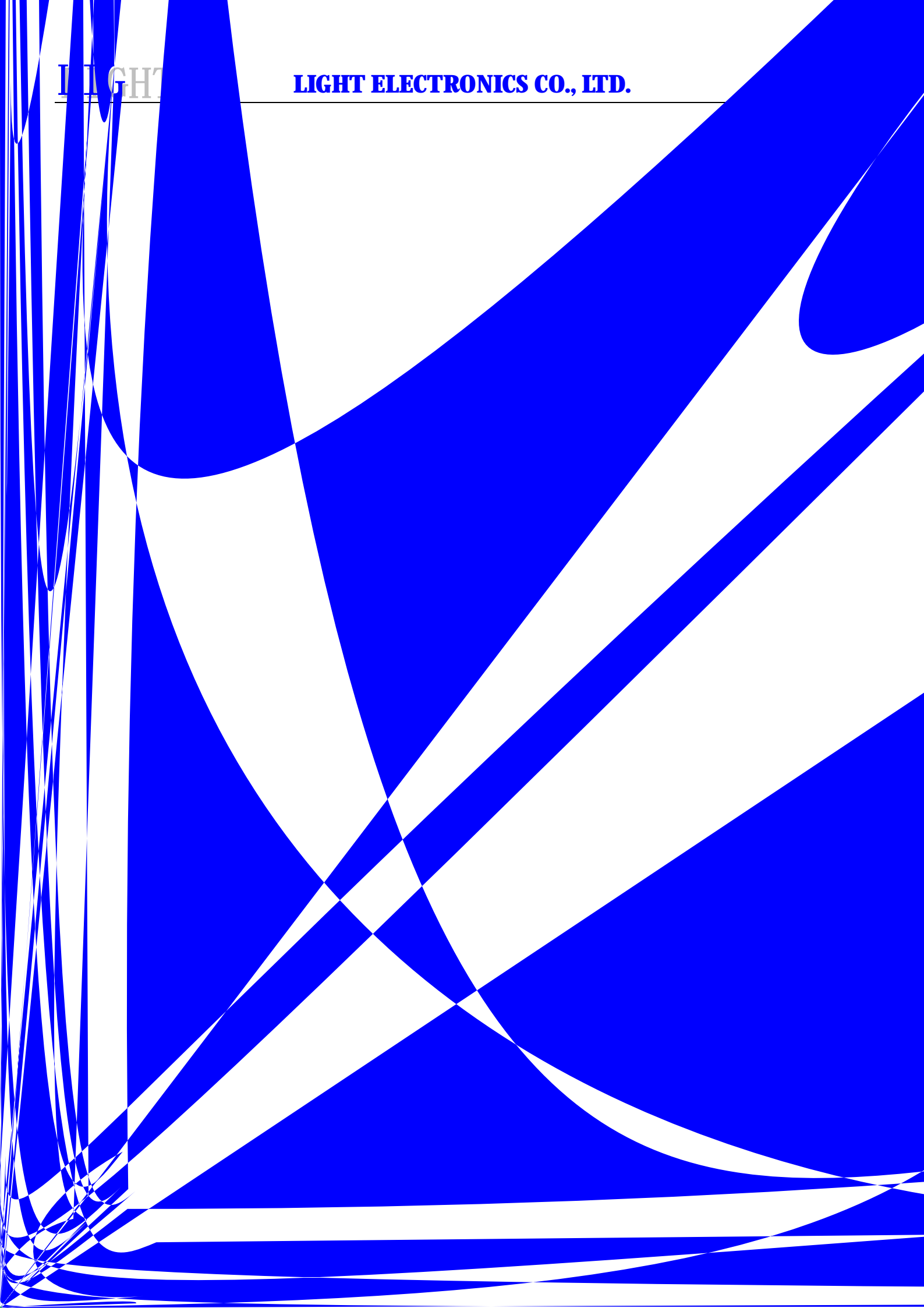


LIGHT

LIGHT ELECTRONICS CO., LTD.

LIGHT

LIGHT ELECTRONICS CO., LTD.



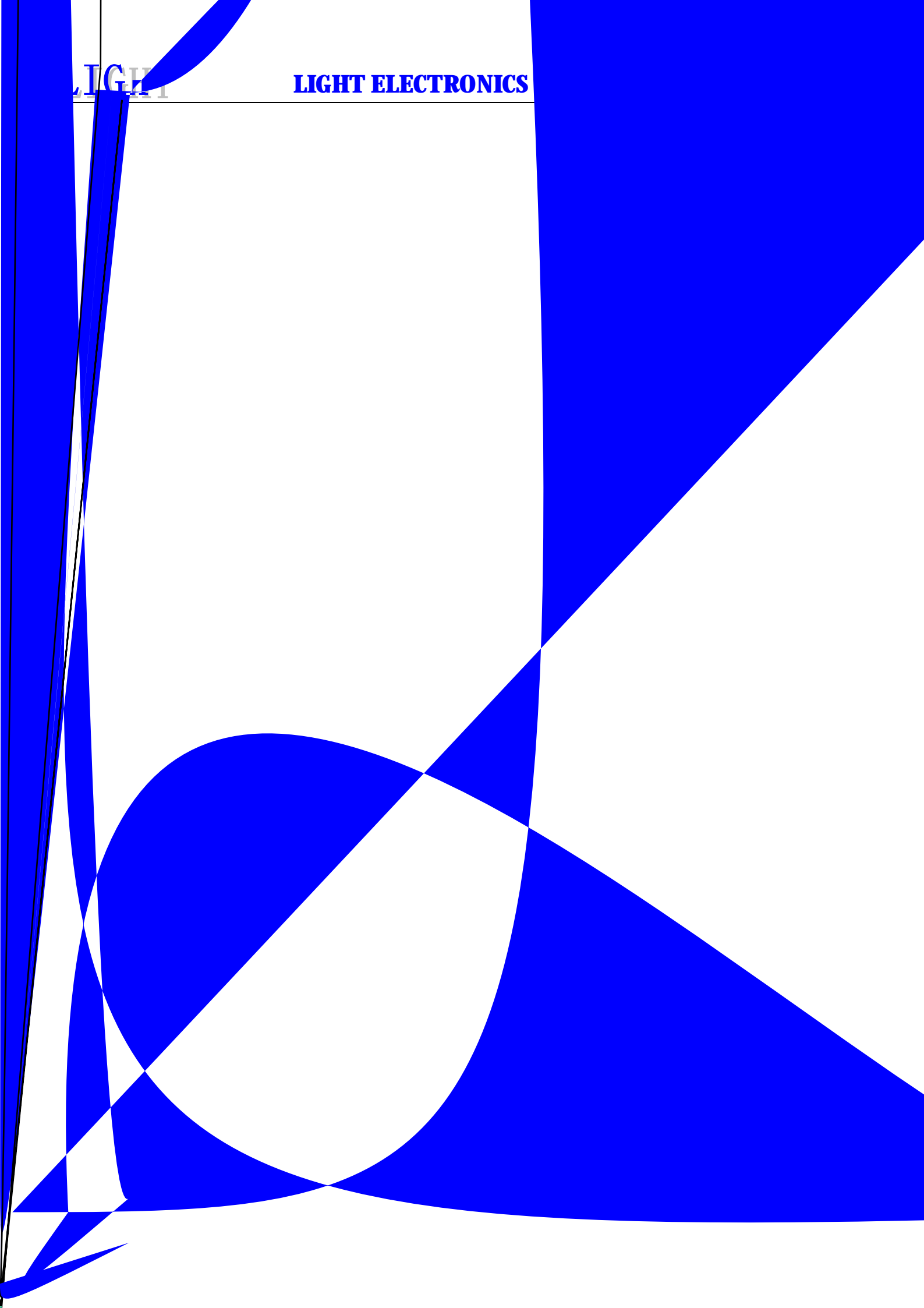


2

Guideline for Soldering (2)

LIGHT

LIGHT ELECTRONICS



(2)

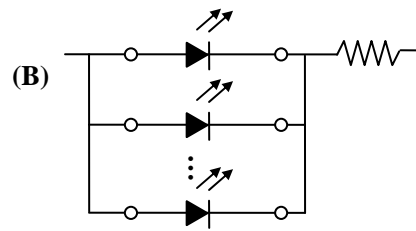
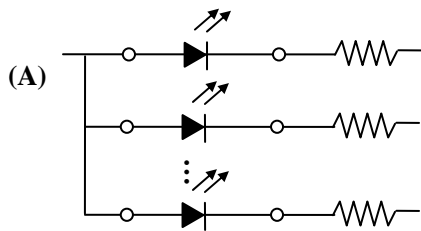
Precautions (2)

3.

Design Consideration

-

-



-

4.

Reverse voltage protection

-

