



**LIGHT**

**LIGHT ELECTRONICS CO., LTD.**

---



LIG

**LIGHT ELECTRONICS CO., LTD.**

---

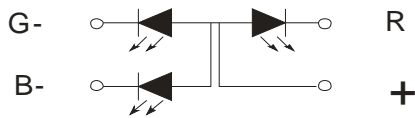
## Reliability Test Items And Conditions

实验项目	参考标准	实验条件	时间	样品数	判据
		←→			

## Product design and operational recommendation

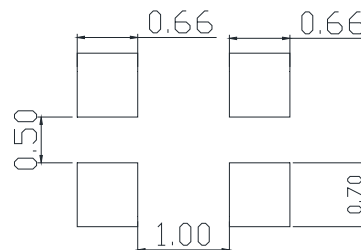
1 mm

Product design Unit: mm



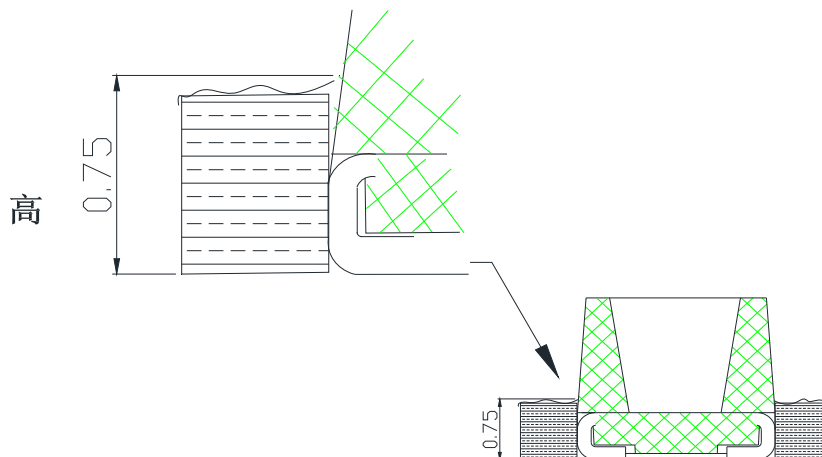
2 mm

Recommended soldering pad (Unit: mm)



3 0.75mm

Recommendation for glue filling: filling height must be higher than or equal to 0.75mm



## 1

### Packaging (1)

◇ Carrier Tape

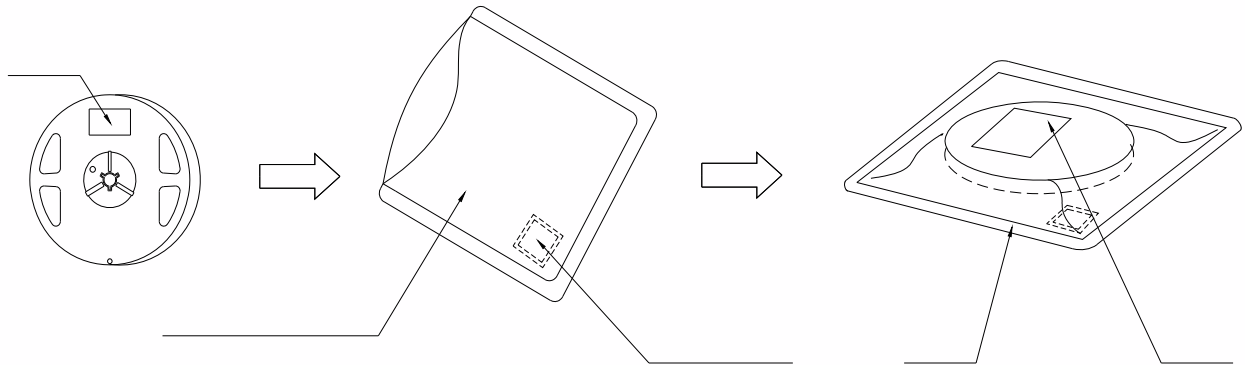
◇

## 2

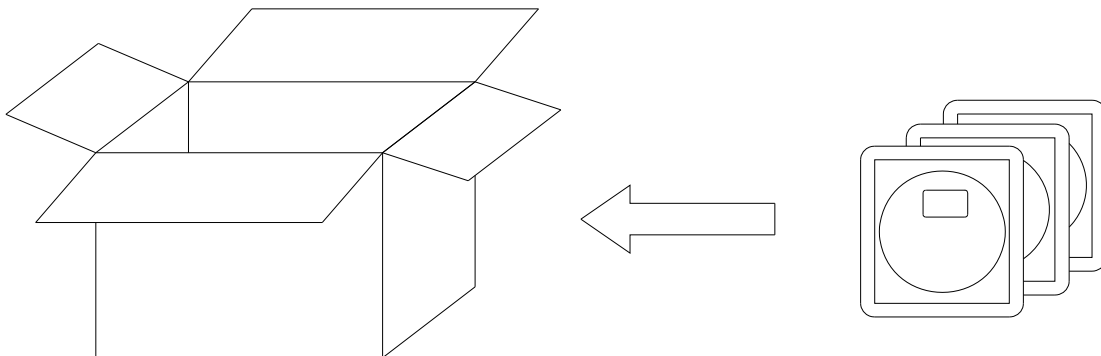
### Packaging( 2)



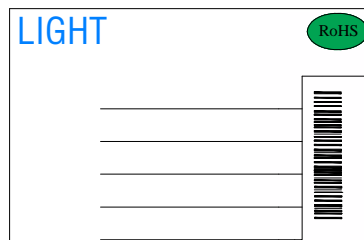
#### Moisture Proof and Anti-Electrostatic Foil Bag



#### Cardboard Box



#### Label Explanation

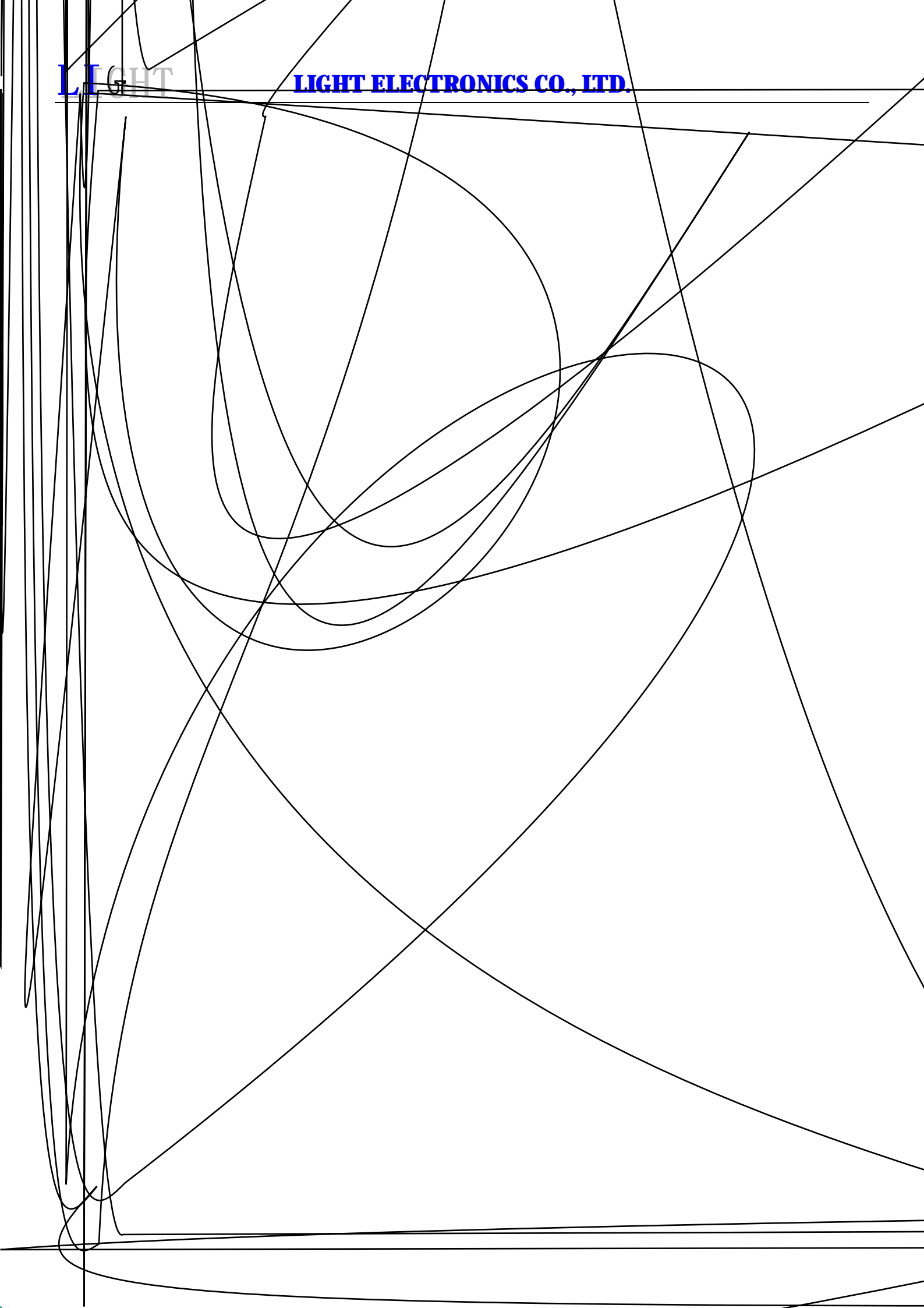


TYPE NO./	QUANTITY/
BIN./	DATE CODE/
REMARKS/	LOT NO./



LIGHT

LIGHT ELECTRONICS CO., LTD.





## 2

### Guideline for Soldering (2)

## (1)

### Precautions (1)

1.

#### Storage

- 
- 
- 
- 
- 

2.

#### Static Electricity

- 
- 
-

## (2)

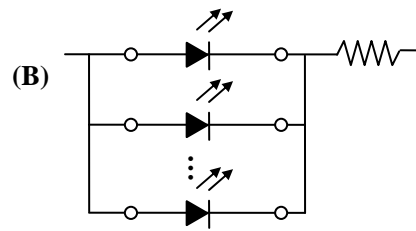
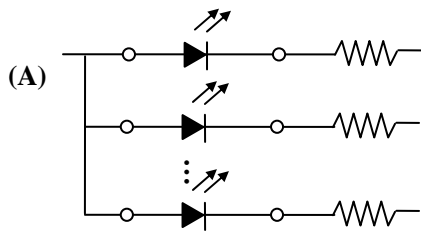
### Precautions (2)

3.

#### Design Consideration

- 

- 



- 

4.

#### Reverse voltage protection

-

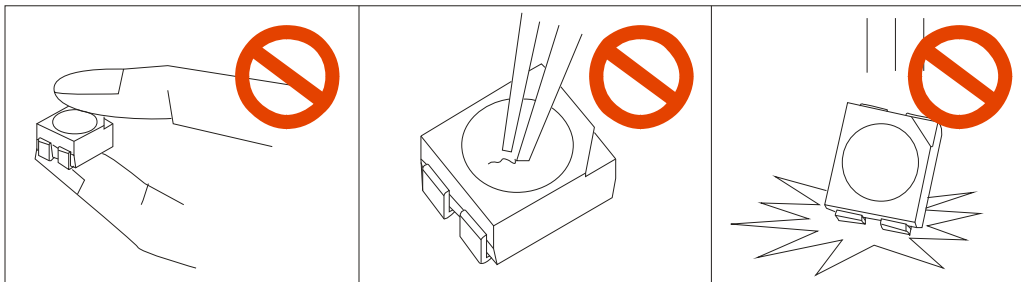
5.

**The safe temperature for LEDs working**

•

6.

•



•